

1 Alarm Management

1.1 Alarm Server Configuration

Alarm server is in charge of receiving and recording alarm information of connected devices and then sending the alarm information to the relevant user terminal system or devices in accordance with prior alarm settings. There is a default alarm server.

Go to Home→Add, Edit or Delete Device →Alarm Server interface to view the online status of the alarm server. If it is not online, please check its network connection.

Add, Edit or Delete Device						
Device Setting						
Area Setting						
Channel Group Setting						
Device Type	Server Name	IP Address	Port	Client Connection Status	Authentication Server Connection Sta...	Edit
Encoding Device (Online/Total number:1/1)	Alarm Server	10.214.241.91	6033	Online	Online	
Decoder (Online/Total number:0/0)						
Alarm Host (Online/Total number:0/0)						
Access Control System (Online/Total number:0/0)						

1.2 Alarm Configuration

① Go to Home→Device Setting interface.

Encoding Device

OSD Setting Image Setting Stream Setting Privacy Mask Setting ROI Setting Focusing Setting Motion Detection Motion Alarm Linkage Exception Detection License plate detection

Search

default area (Online/Total numb...)

IP 197

IP 197

2022/01/12 17:03:05

Detection area: Shielded area

Display Min: 4% Display Max: 99%

Draw area Clear

Enable

Save inspection panorama

Save the detection target map

Alarm Holding Time: 20

Trigger SD card snapshot

Trigger SD card recording

Trigger email

Trigger FTP

FTP Server Address

1 Send Picture

Apply

Select the desired device to enable alarms (refer to the user manual of the corresponding device for the detailed settings).

② Go to Home→Alarm Center→Alarm Linkage interface.

Alarm Type	Monitoring Point-Motion Detection	All ON	All OFF	Reset	Apply	Filter				
Name	Audio	PTZ Control	Record	Alarm Preview	Snapshot	Alarm Output	Voice Broadcast	Open Door	TV Wall	Trigger Er
IP 197	OFF	OFF	OFF	Link to itself (On)	OFF	OFF	OFF	OFF	OFF	OFF
single	OFF	OFF	OFF	Link to itself (Off)	OFF	OFF	OFF	OFF	OFF	OFF
				Free Choice						

Select area, alarm type and then enable alarm linkages.

All ON: enable all alarm linkages of the current alarm type and area (schedule excluded).

All OFF: disable all alarm linkages of the current alarm type and area (schedule excluded).

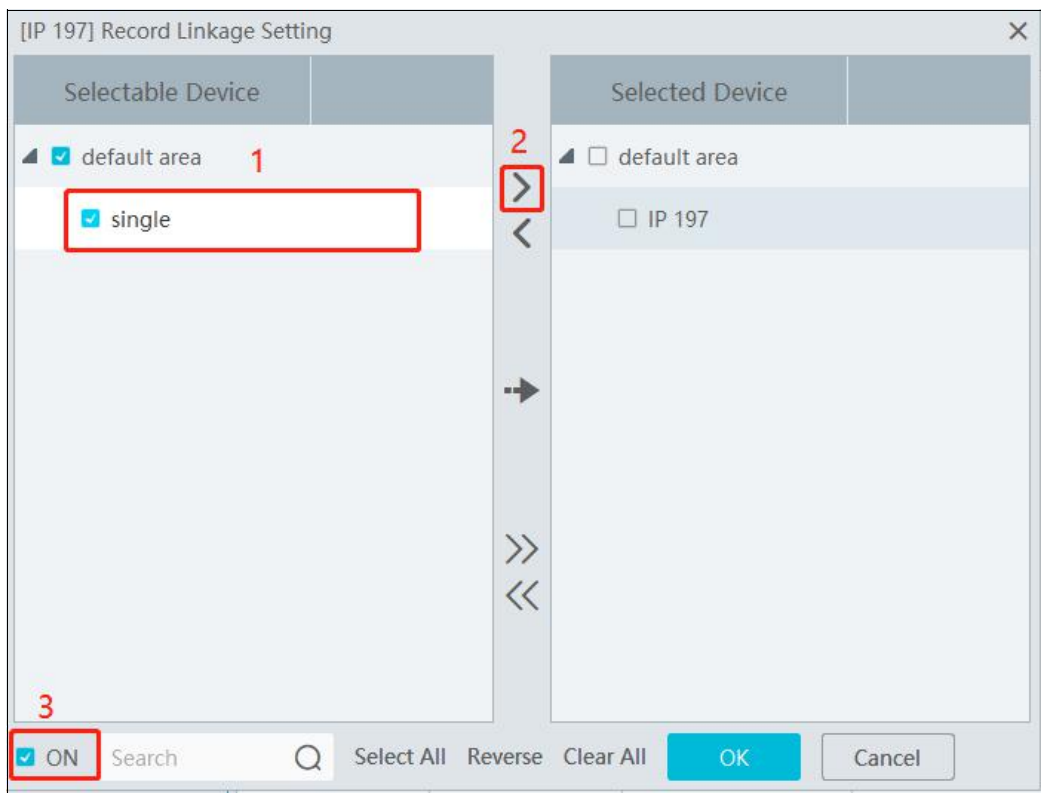
Select beside the device name and select “ON” to enable all alarm linkages of the device (schedule excluded).

Alarm Type: Monitoring Point-Motion Detection											
		All ON	All OFF	Reset	Apply	Filter					
Name	Audio	PTZ Control	Record	Alarm Preview	Snapshot	Alarm Output	Voice Broadcast	Open Door	TV Wall	Trigger Er	
IP 197	<input type="checkbox"/> OFF	OFF	OFF	OFF	OFF	OFF	OFF	OFF	OFF	OFF	
single	<input checked="" type="checkbox"/> ON <input type="checkbox"/> OFF	OFF	OFF	OFF	OFF	OFF	OFF	OFF	OFF	OFF	

Select beside the title (like record) to enable record linkage of all devices (schedule excluded). Select “Link to itself (On)” to quickly select the camera itself as the record camera.

Alarm Type: Monitoring Point-Motion Detection											
		All ON	All OFF	Reset	Apply	Filter					
Name	Audio	PTZ Control	Record	Alarm Preview	Snapshot	Alarm Output	Voice Broadcast	Open Door	TV Wall	Trigger Er	
IP 197	<input type="checkbox"/> OFF	OFF	<input checked="" type="checkbox"/> Link to itself (On)		OFF	OFF	OFF	OFF	OFF	OFF	
single	<input type="checkbox"/> OFF	OFF	<input type="checkbox"/> Link to itself (Off) <input type="checkbox"/> Free Choice		OFF	OFF	OFF	OFF	OFF	OFF	

The alarm linkage settings of PTZ control, record, alarm view, snapshot, alarm output and TV Wall are the same with each other. Here take record linkage for example to introduce the setting steps.



Check the selectable channel and click to select the channel; check the selected channel and click to remove this channel; click to select all channels; click to remove all selected channel. After the channels are selected, check “On” and then click “OK” to save the settings.

Note: Before checking voice broadcast, please upload the voice first (See chapter 20.7 Audio Uploading for details).

Before checking Email, please set the sender’s email address and the recipient address first (See chapter 10.5 Email Settings for details).

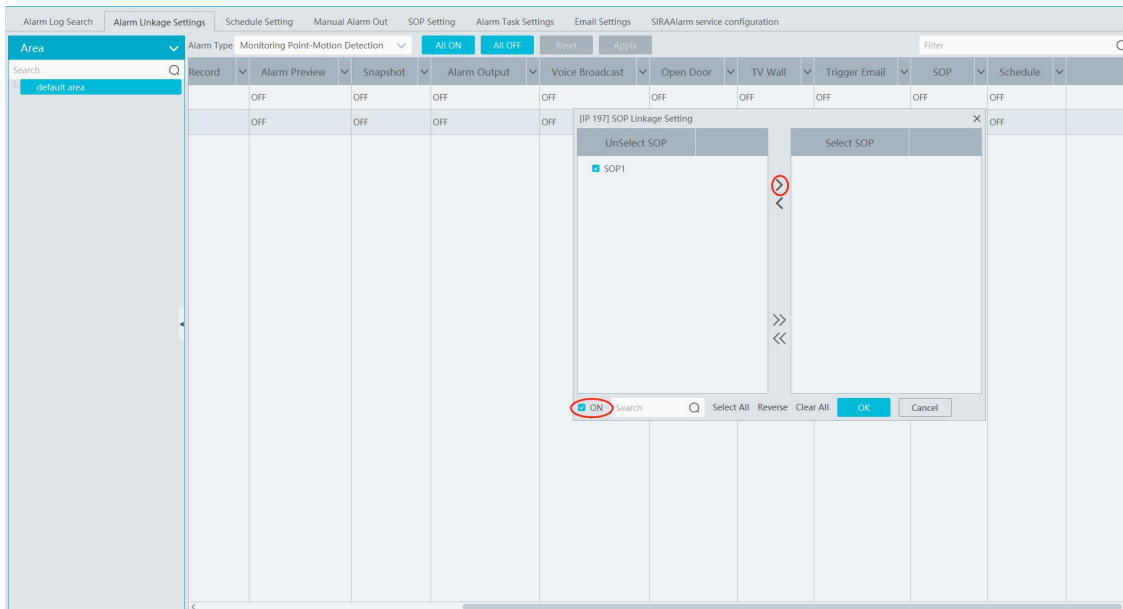
Before checking SOP, please set the SOP first (See chapter 10.3 SOP Settings for details)

- ③ Set alarm schedule. Select the schedule of the desired device. 7*24 or 5*24 is the default schedule. Other schedules need to be set in advance. Click the “Schedule Setting” tab to set (See Schedule Recording→To set schedule for details).

1.3 SOP Settings

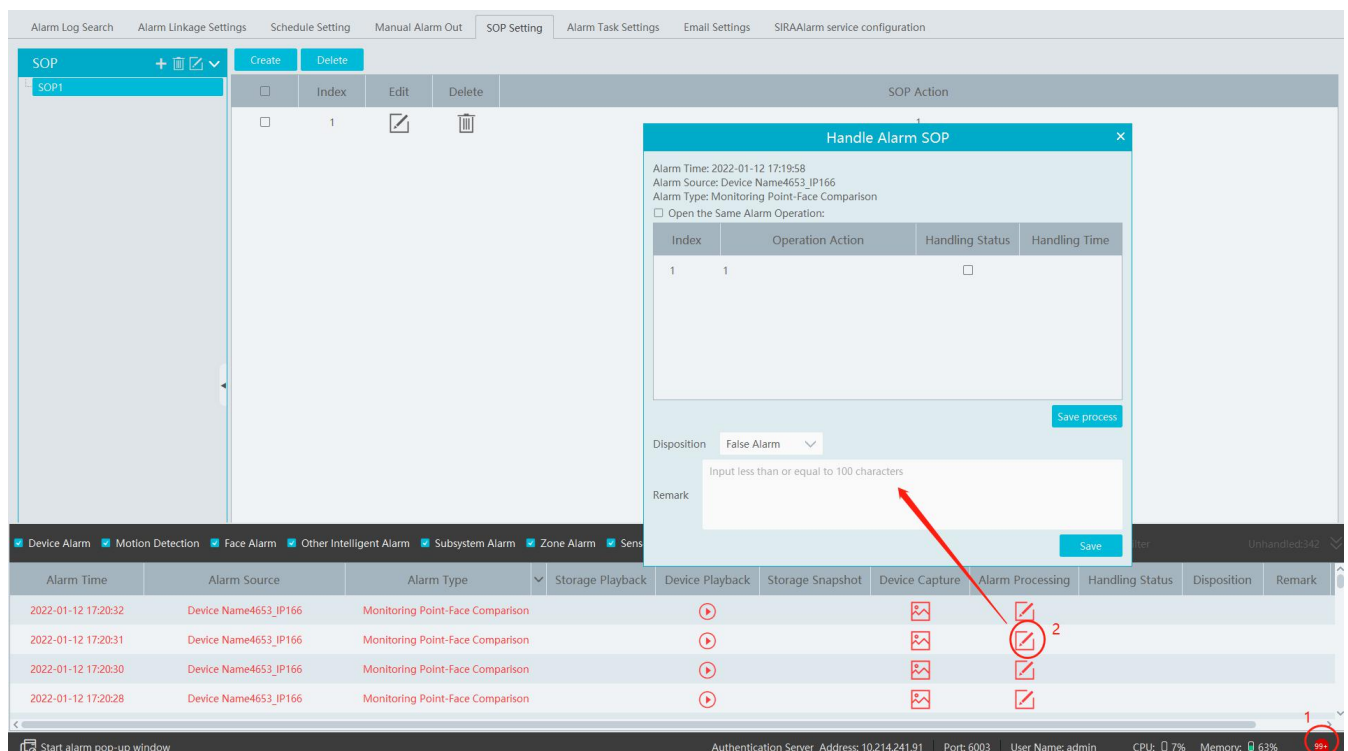
Click the “SOP Setting” tab in the alarm center interface to go to the following interface as shown below.

1. Click “+” to add a SOP name.
2. Click “Create” to create a SOP action.



3. Click to extend the alarm list.
4. Click to handle the alarm. Select the SOP action and then click “Save Process”. After that, choose disposition and enter remark as needed.

The disposition includes: False alarm, true alarm, customer test, technical event, service test.



After the alarm is processed, the alarm handling status and disposition will be shown as below.

Alarm Time	Alarm Source	Alarm Type	Storage Playback	Device Playback	Storage Snapshot	Device Capture	Alarm Processing	Handling Status	Disposition	Remark
2022-01-12 17:22:14	Device Name4653_IP166	Monitoring Point-Face Comparison		▶		📷	☑	Processed	False Alarm	
2022-01-12 17:22:13	Device Name4653_IP166	Monitoring Point-Face Comparison		▶		📷	☑			
2022-01-12 17:22:11	Device Name4653_IP166	Monitoring Point-Face Comparison		▶		📷	☑			
2022-01-12 17:22:10	Device Name4653_IP166	Monitoring Point-Face Comparison		▶		📷	☑			

If “SOP Filter” is enabled, the alarm events of the channel set the SOP will be listed.

If “Alarm Preview” is set for the monitoring point, select the corresponding alarm items and then right click to choose “Alarm Preview” to jump to the alarm preview interface.

Alarm Time	Alarm Source	Alarm Type	Storage Playback	Device Playback	Storage Snapshot	Device Capture	Alarm Processing	Handling Status	Disposition	Remark
2022-01-12 17:22:13	Device Name4653_IP166	Monitoring Point-Face Comparison		▶		📷	☑			
2022-01-12 17:22:11	Device Name4653_IP166	Monitoring Point-Face Comparison		▶		📷	☑			
2022-01-12 17:22:10	Device Name4653_IP166	Monitoring Point-Face Comparison		▶		📷	☑			

1.4 Alarm Task Settings

In this interface, you can set the leaving alarm task.

Leaving alarm: When someone leaves the predefined area and doesn't come back within the set time duration, the system will perform alarm linkages.

To set a leaving alarm task:

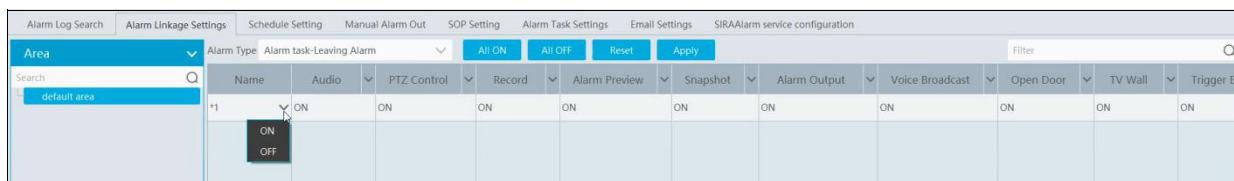
1. Enter the Alarm Task Setting interface.
2. Click [Add] to add the alarm task.

Set the task name, interval time, schedule and choose the camera.

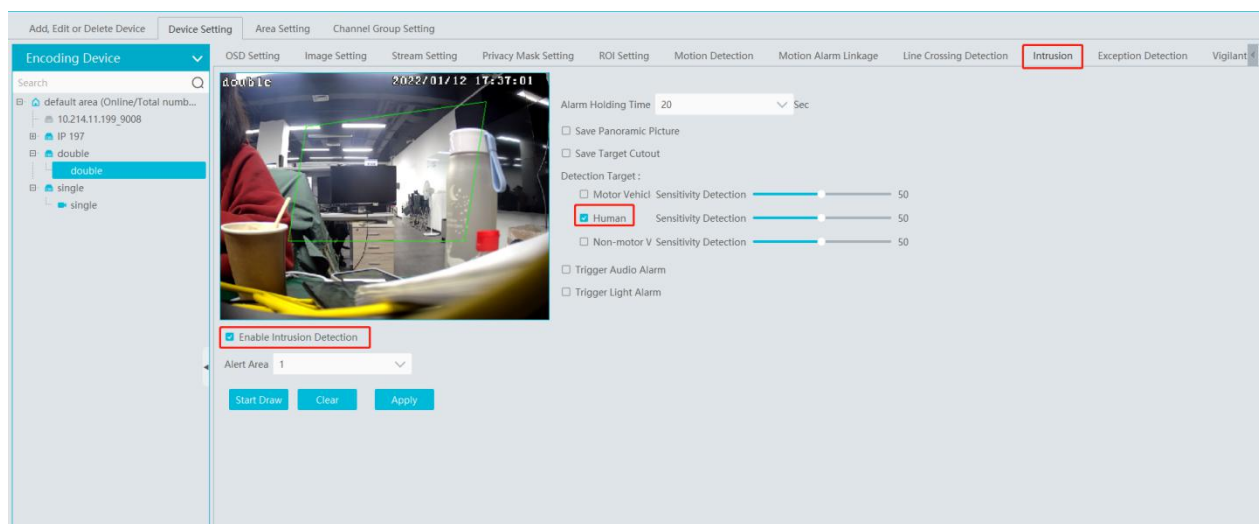
Multiple cameras can be added to an alarm task.

3. Set the alarm linkage items. In the alarm linkage settings interface, select the alarm type as “Alarm task-Leaving Alarm”. Then enable

the desired alarm linkage (like “Alarm preview”) and set the schedule.

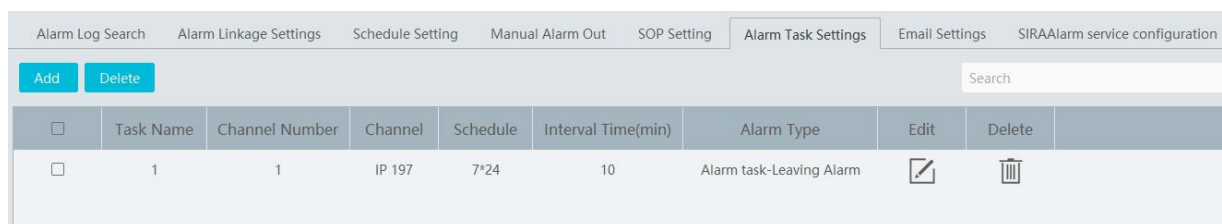


4. Go to the Device Setting interface to enable Intrusion and set the detected area.



Note:

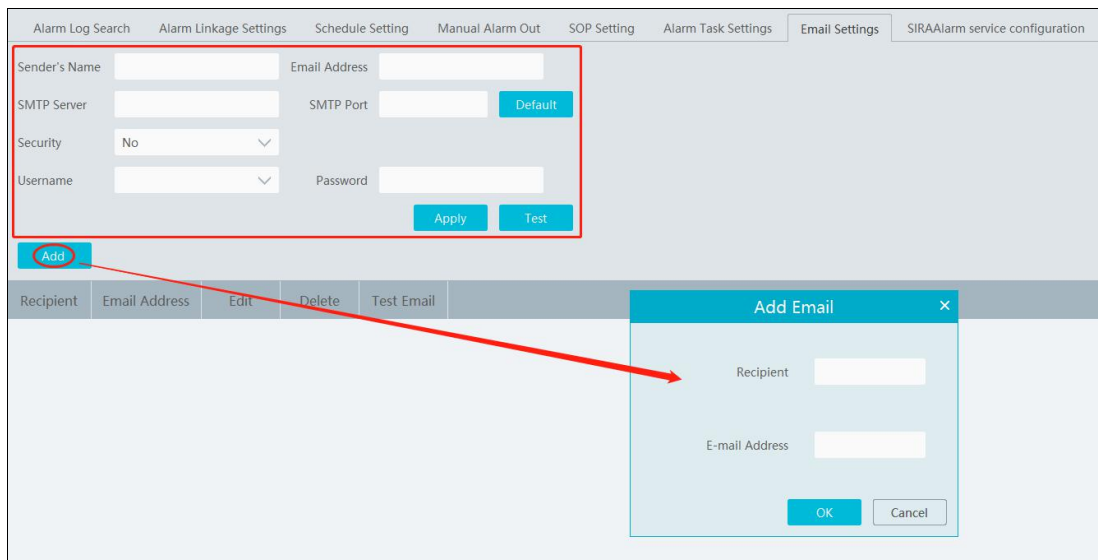
1. The selected camera must support and enable intrusion function, or leaving alarm will not take effect. If the camera supports vehicle/people classification, please check “Human” as the detection target.
2. After the leaving alarm task is set and intrusion is enabled for the camera, when someone enters the predefined area and stays there, this person will be judged as “ON Duty” so that leaving alarm will not be triggered and the intrusion alarm will not be displayed on the alarm list; but when this person leaves and doesn’t return within the set time duration (interval time) or no one appears in the set time duration, leaving alarm will be triggered.



1.5 Email Settings

Alarm information can be received by the specified Email address if the Email parameters have been set in advance.

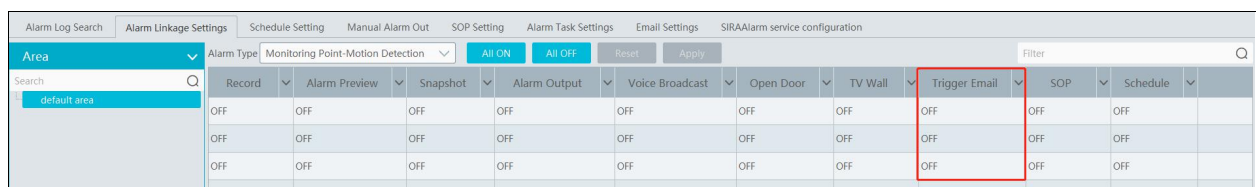
Click Home→Alarm Center→Email Setting to go to the following interface. Add the sender and recipient’s email information here.



In the sender's Email information area, fill out the corresponding information and then click "Apply" to save the settings.

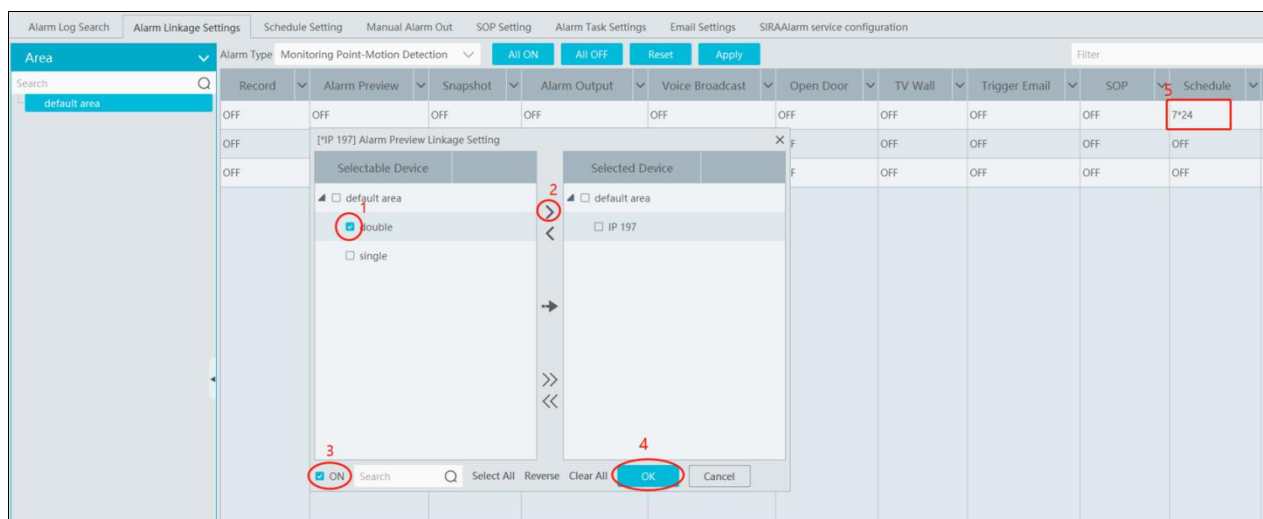
Clicking on the [Add] button adds the recipient information.

After that, in the alarm linkage setting interface, you can trigger Email.

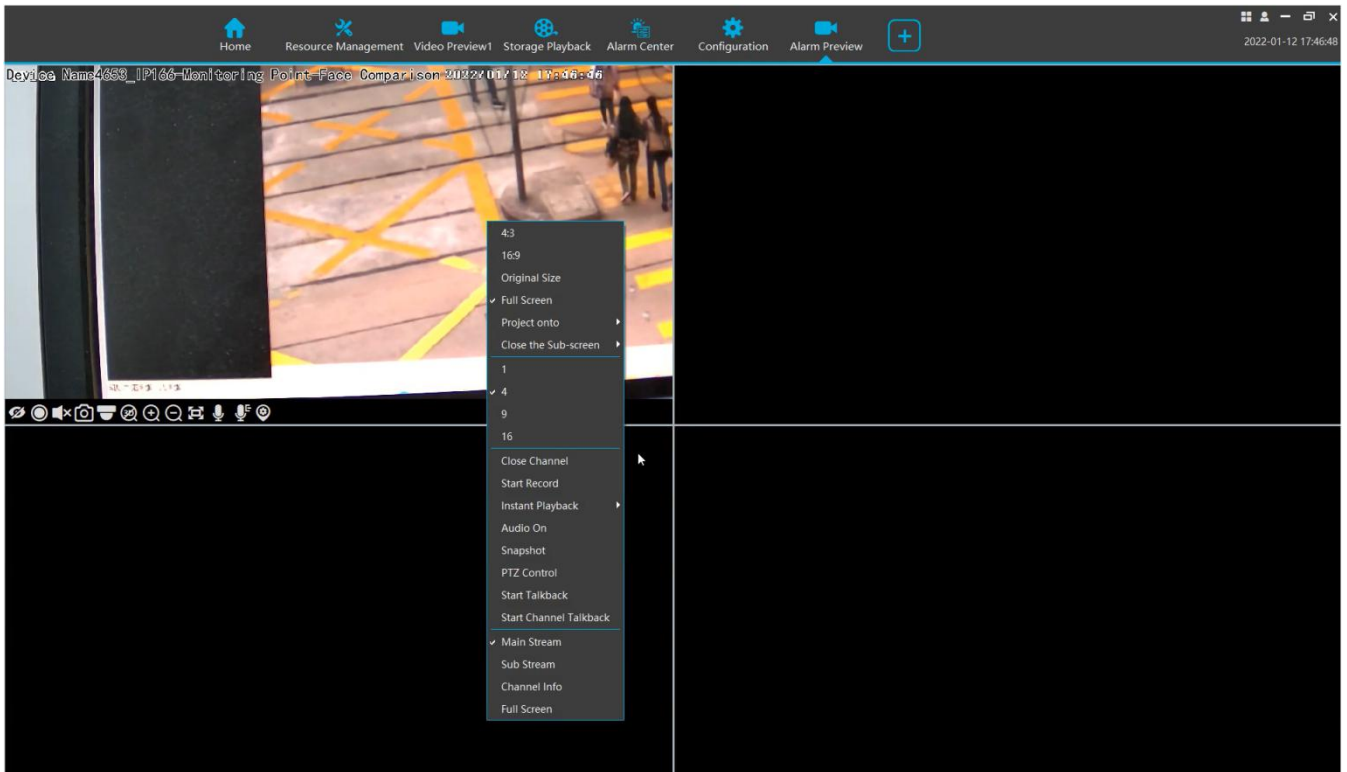



1.6 Alarm View



Having set the alarm preview linkage, the alarm view window will prompt when an alarm is triggered.



In the alarm preview interface, you can select multi-screen display mode by right clicking on the preview window as shown below.



Click  on the bottom right corner to expand the alarm list as shown above. Hover the cursor on the top of the alarm list and then a bidirectional arrow will appear. Drag the alarm list up or down to extend or shrink the alarm list.



Click  or  to play the record or captured images.

Right clicking on an alarm item displays a menu as shown below. Click “Alarm Preview” to jump to the alarm preview interface.

Alarm Time	Alarm Source	Alarm Type	Storage Playback	Device Playback	Storage Snapshot	Device Capture	Alarm Processing	Handling Status	Disposition	Remark
2022-01-12 17:49:31	Device Name4653_IP166	Monitoring Point-Face Comparison								
2022-01-12 17:49:30	Device Name4653_IP166	Monitoring Point-Face Comparison								
2022-01-12 17:49:29	Device Name4653_IP166	Monitoring Point-Face Comparison								
2022-01-12 17:49:28	Device Name4653_IP166	Monitoring Point-Face Comparison								

1.7 Alarm Log

No.	Alarm Time	Alarm Source	Alarm Type	Details	Storage Playback	Device Playback	Storage Snapshot	Device Capture	Alarm
1	2022-01-12 17:50:21	Device Name4653_IP166	Monitoring Point-Face Match						
2	2022-01-12 17:50:18	Device Name4653_IP166	Monitoring Point-Face Match						
3	2022-01-12 17:50:17	Device Name4653_IP166	Monitoring Point-Face Match						
4	2022-01-12 17:50:14	Device Name4653_IP166	Monitoring Point-Face Match						
5	2022-01-12 17:50:13	Device Name4653_IP166	Monitoring Point-Face Match						
6	2022-01-12 17:50:11	Device Name4653_IP166	Monitoring Point-Motion Detect						
7	2022-01-12 17:50:09	Device Name4653_IP166	Monitoring Point-Face Match						
8	2022-01-12 17:50:08	Device Name4653_IP166	Monitoring Point-Face Match						
9	2022-01-12 17:50:07	Device Name4653_IP166	Monitoring Point-Face Match						
10	2022-01-12 17:50:06	Device Name4653_IP166	Monitoring Point-Motion Detect						
11	2022-01-12 17:50:06	Device Name4653_IP166	Monitoring Point-Face Match						
12	2022-01-12 17:50:05	Device Name4653_IP166	Monitoring Point-Face Match						
13	2022-01-12 17:50:03	Device Name4653_IP166	Monitoring Point-Face Match						
14	2022-01-12 17:50:02	Device Name4653_IP166	Monitoring Point-Face Match						
15	2022-01-12 17:49:54	Device Name4653_IP166	Monitoring Point-Face Match						
16	2022-01-12 17:49:53	Device Name4653_IP166	Monitoring Point-Face Match						
17	2022-01-12 17:49:52	Device Name4653_IP166	Monitoring Point-Exception Detection						
18	2022-01-12 17:49:52	Device Name4653_IP166	Monitoring Point-Face Match						
19	2022-01-12 17:49:49	Device Name4653_IP166	Monitoring Point-Motion Detect						

Click  to play the record; click  to open the snapshot search window as shown below.

Snapshot Search
✕


Monitoring Point


IP Camera01


Start Time


End Time


Search Result[IP Camera01]



 2021-01-27 11:45:21



 2021-01-27 11:45:31



 2021-01-27 11:45:38



 2021-01-27 11:45:46


 2021-01-27 11:45:52


 2021-01-27 11:46:01


 2021-01-27 11:46:08


 2021-01-27 11:46:13


 2021-01-27 11:46:16

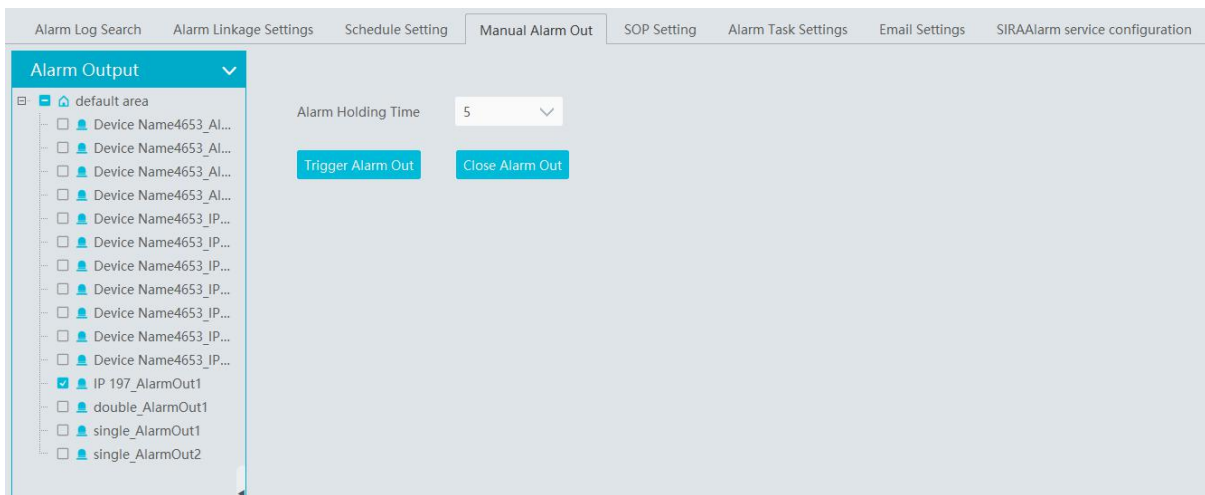
Select All Reverse Download

 The /2Page
Per Page Entry 1-10 Total: 11

Check the searched image and then click “Download” at the bottom of the interface to download this picture.

1.8 Manual Alarm Out

Click “Manual Alarm Out” tab to go to the following interface.

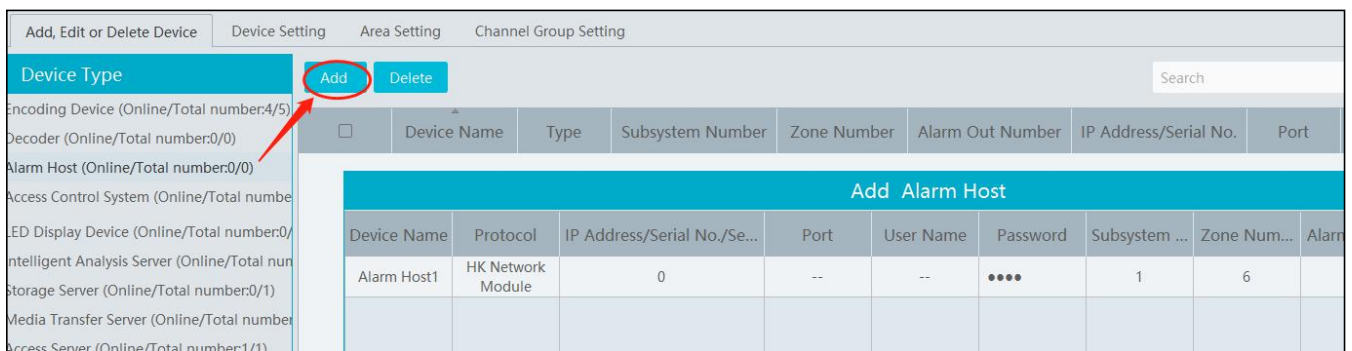


Select the camera, set the alarm holding time and then click [Trigger Alarm Out] to manually trigger the alarm out of the camera; click [Close Alarm Out] to manually turn off the alarm out of the camera.

1.9 Anti-theft Alarm System

1.9.1 Add Alarm Host

Go to Home→Add, Edit or Delete Device→Alarm Host interface. Click [Add] to prompt the following interface.



Please add the host name, serial number, port, username, password, subsystem number, zone number, area and access server. Then click [OK] to save the settings.

1.9.2 Subsystem Setting

Go to Home → Anti-theft Alarm → Subsystem interface as shown below. “Arm”, “Disarm”, “Clear Alarm” or “Refresh Status” can be operated in this interface.

